

REALTIME DMON USER MANUAL

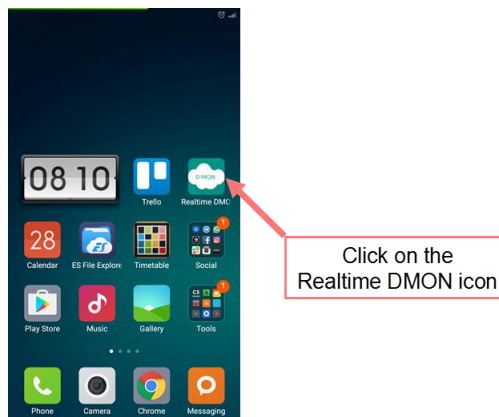
1.0 Introduction

Realtime DMON is an application that is meant to be used by anyone who wishes to get acquainted with the air that they breathe in. It allows real-time monitoring of the air quality around the area of placement for the Realtime DMON dust monitoring device and provides personalised health precautions.

2.0 Usage Guide

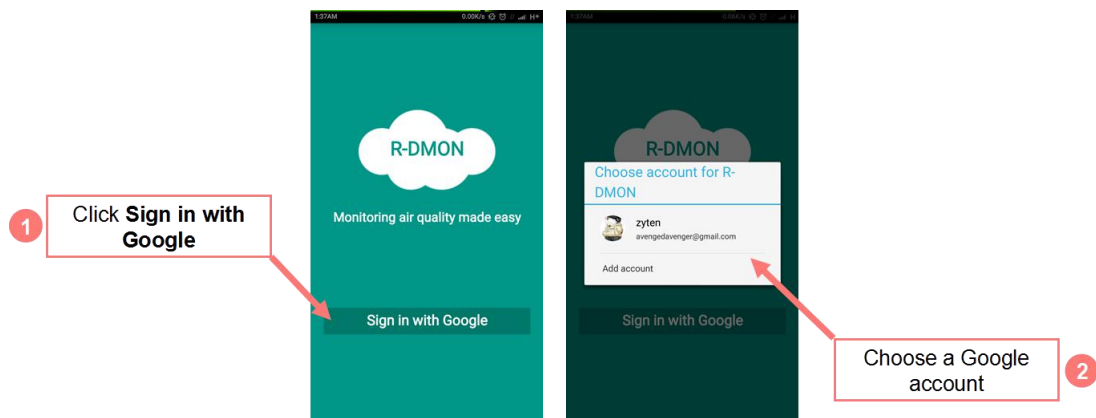
2.1 Sign-in

STEP 1 Click on the Realtime DMON icon in your Android home screen..



Click on the Realtime DMON icon

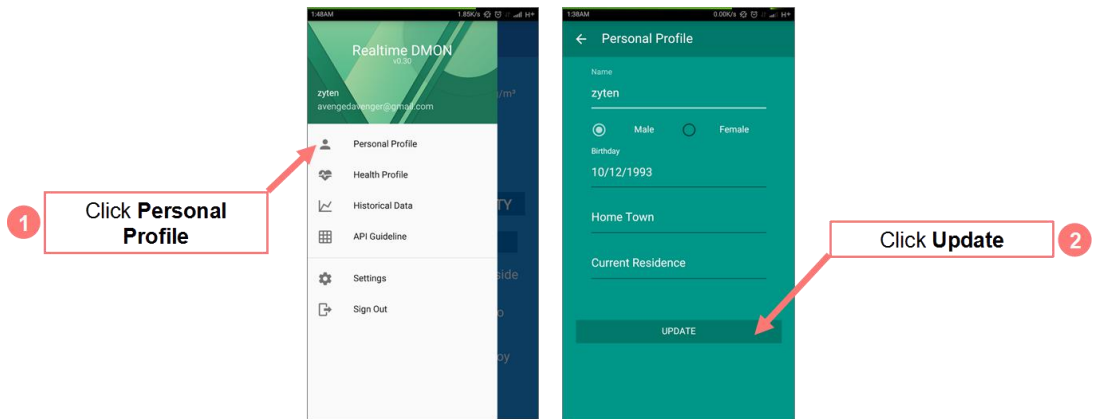
STEP 2 Click on Sign In with Google and choose a Google account.



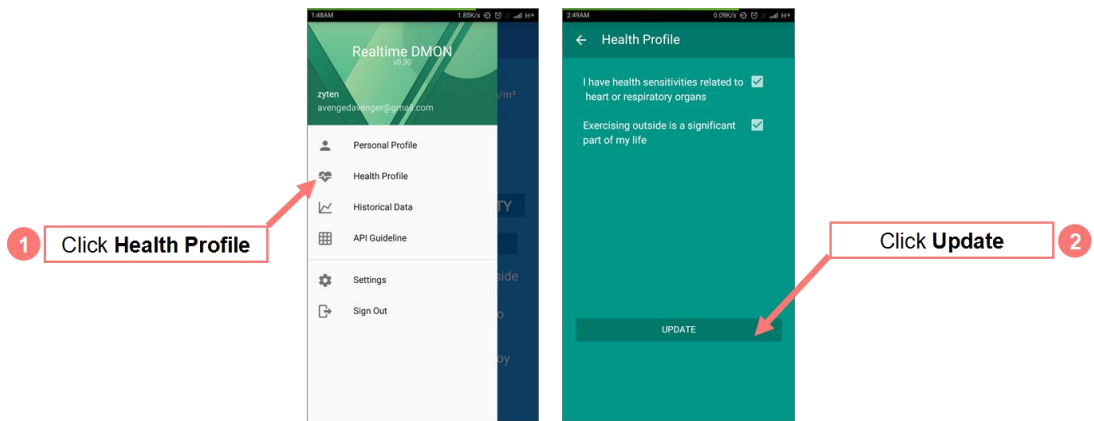
1 Click **Sign in with Google**

2 Choose a Google account

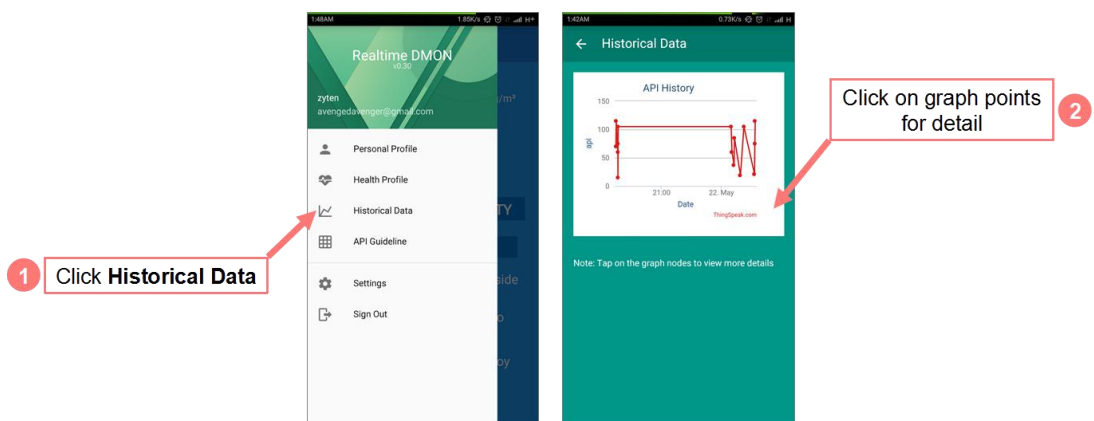
2.2 Update Personal Profile



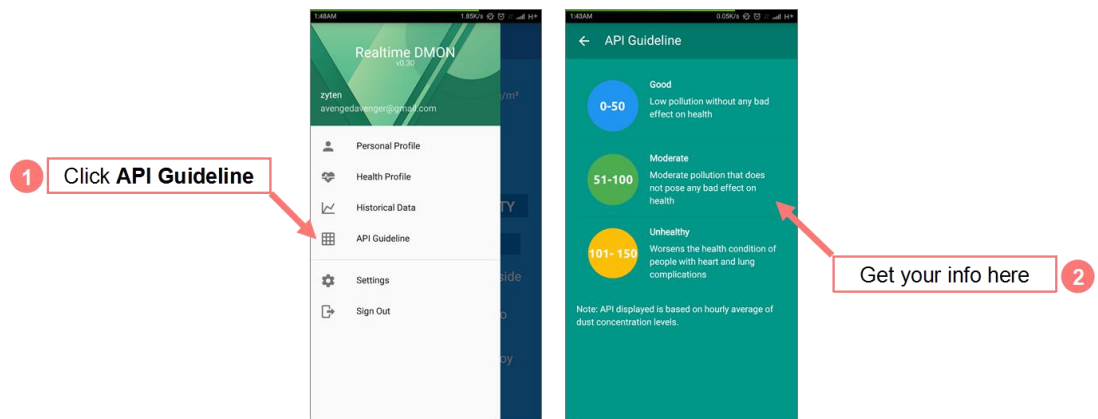
2.3 Update Health Profile



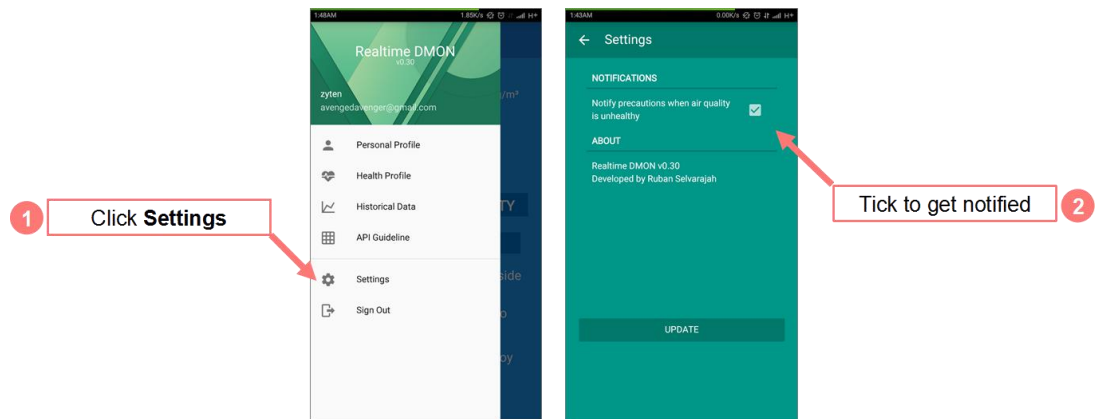
2.4 View Historical Data



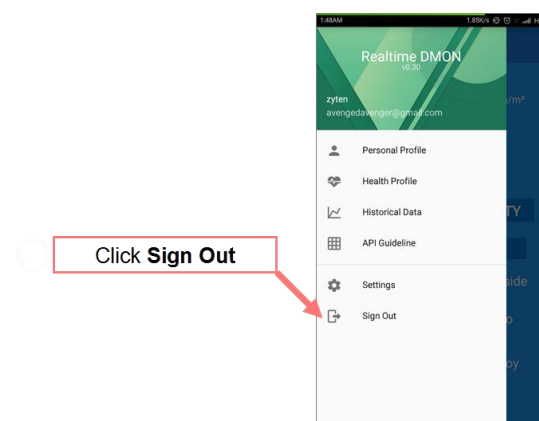
2.5 View API Guideline



2.6 Change Notification Settings



2.7 Sign-out



You're Welcome

